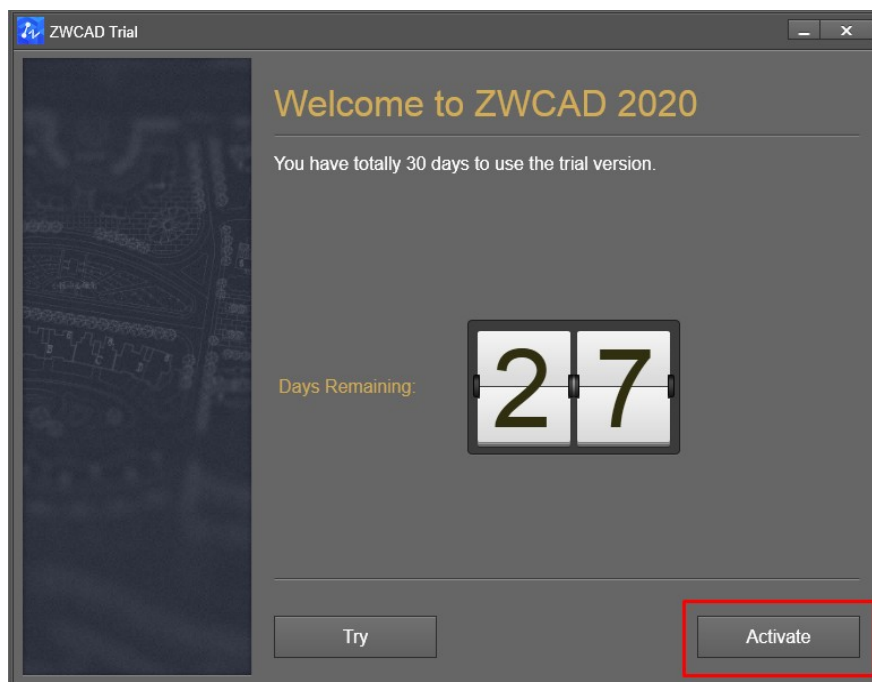
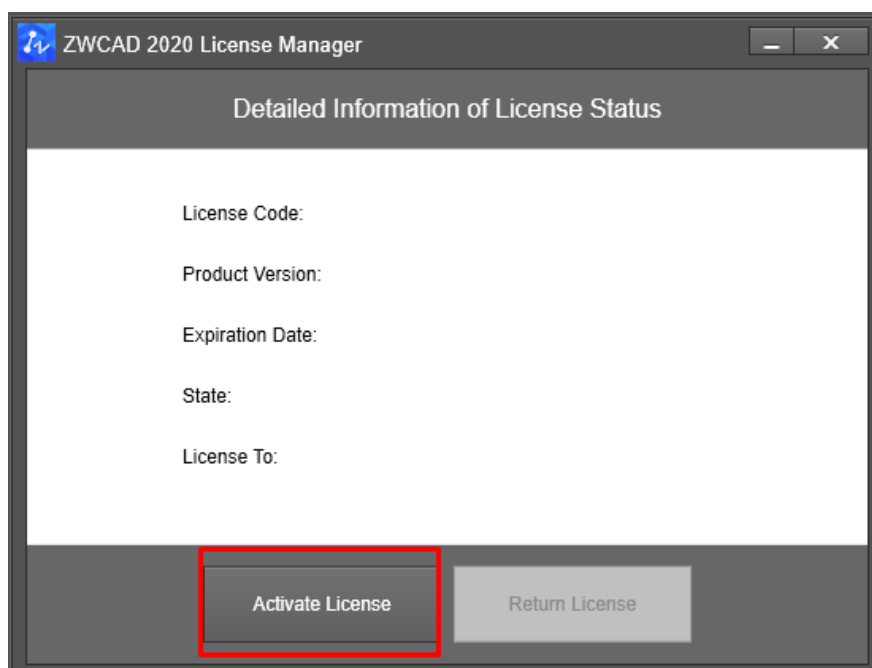


## TUTORIAL DE ATIVAÇÃO EM REDE – USUÁRIO – ZWCAD 2020 SOFTLOCK

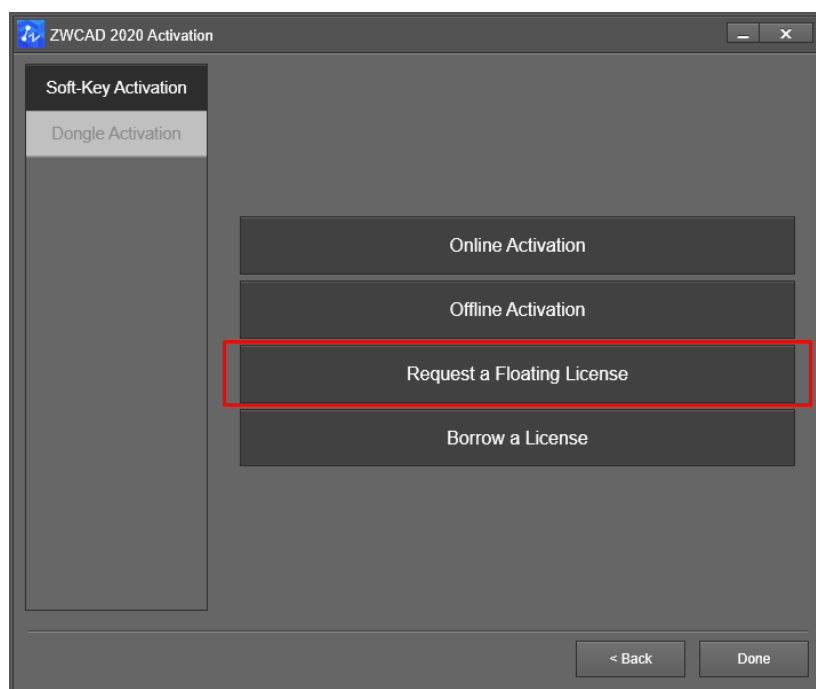
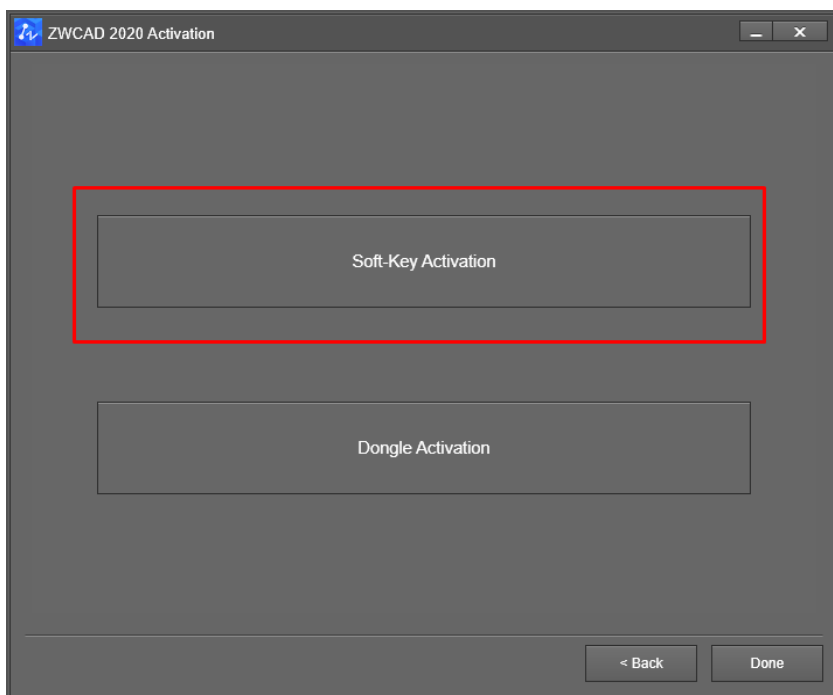
1- Abra seu ZWCAD 2020 e clique em **“Activate”**



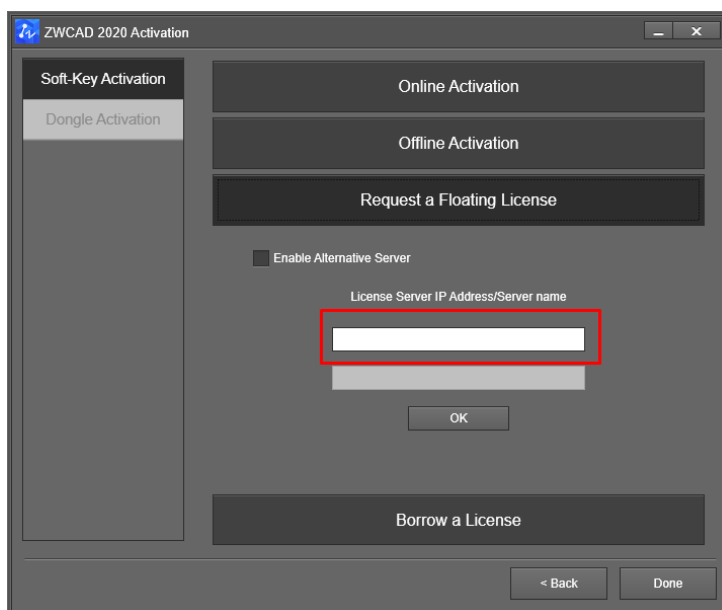
2- Em seguida clique em **“Activate License”**



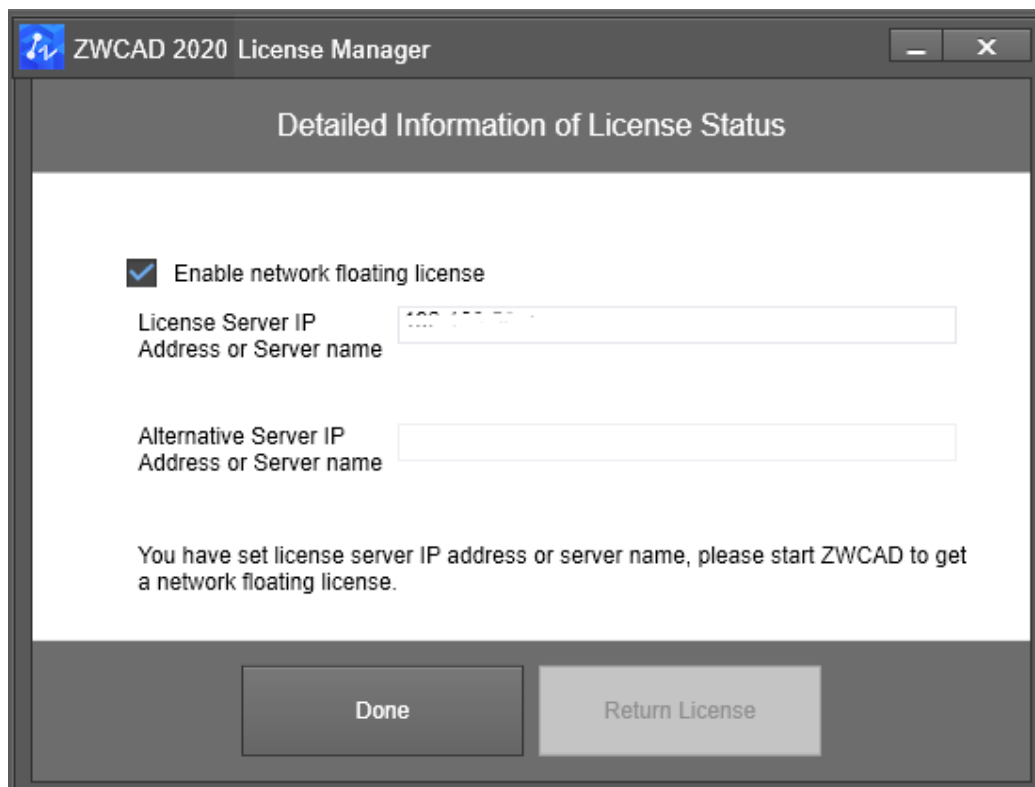
3- Clique em “Soft- Key Activation” e em “Request a Floating License “



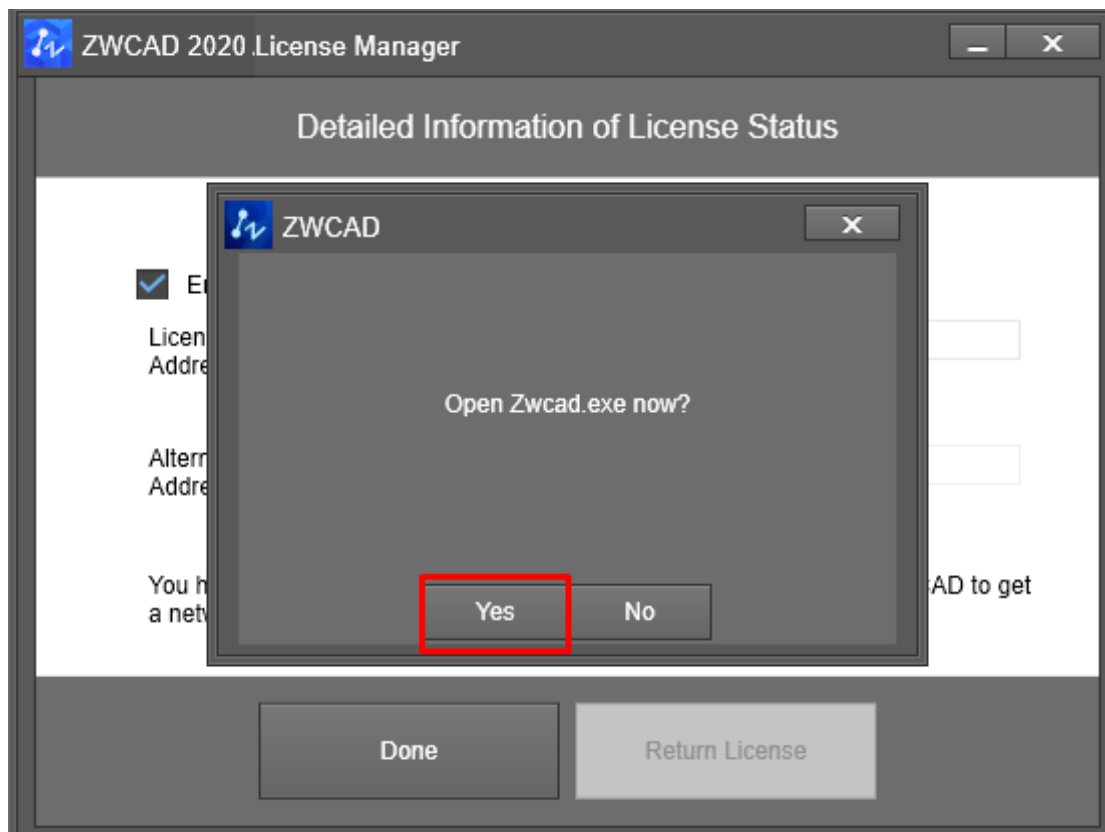
4- Indique o IP ou Nome da maquina do servidor clique em "ok"



5- Você será redirecionado para essa caixa de dialogo. Clique em "Done"



7- Clique em “Yes” e o ZWCAD 2020 abrirá automaticamente.



Pronto! Seu ZWCAD 2020 está ativado e pronto para uso!

totalCAD®  
SOFTWARES TÉCNICOS