

TUTORIAL DE INSTALAÇÃO E ATIVAÇÃO DO GERENCIADOR DE LICENÇA EM REDE – ZWCAD 2020 SOFTLOCK

Com o ZWCAD 2020 já instalado, faça o download do Gerenciador de Licença Rede.

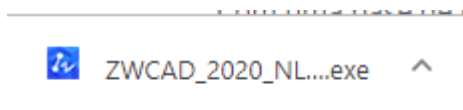
GERENCIADOR DE LICENÇAS ZWCAD 2020 32 BITS:

http://downloads.totalcad.com.br/ZWCAD_2020_NLMTS_Win_32bit.exe

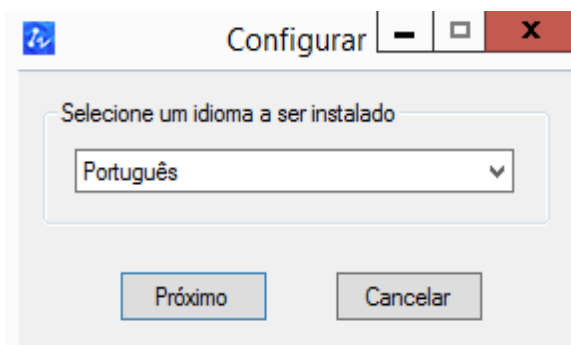
GERENCIADOR DE LICENÇAS ZWCAD 2020 64 BITS:

http://downloads.totalcad.com.br/ZWCAD_2020_NLMTS_Win_64bit.exe

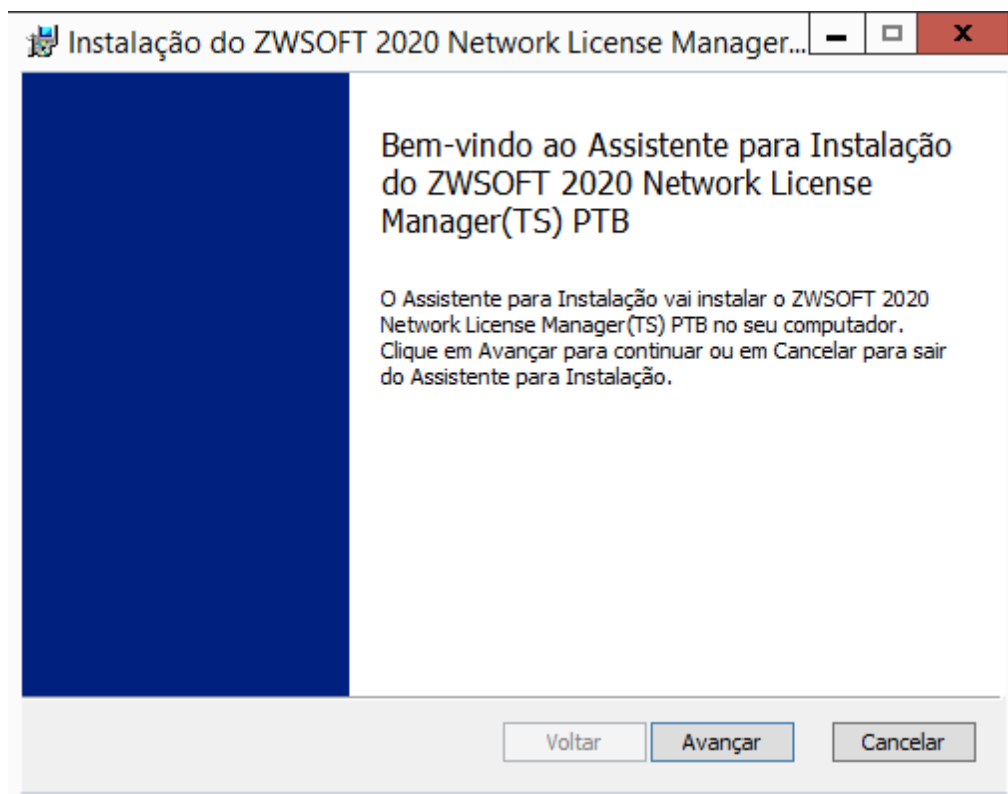
1- Clique no ícone gerado e execute o mesmo



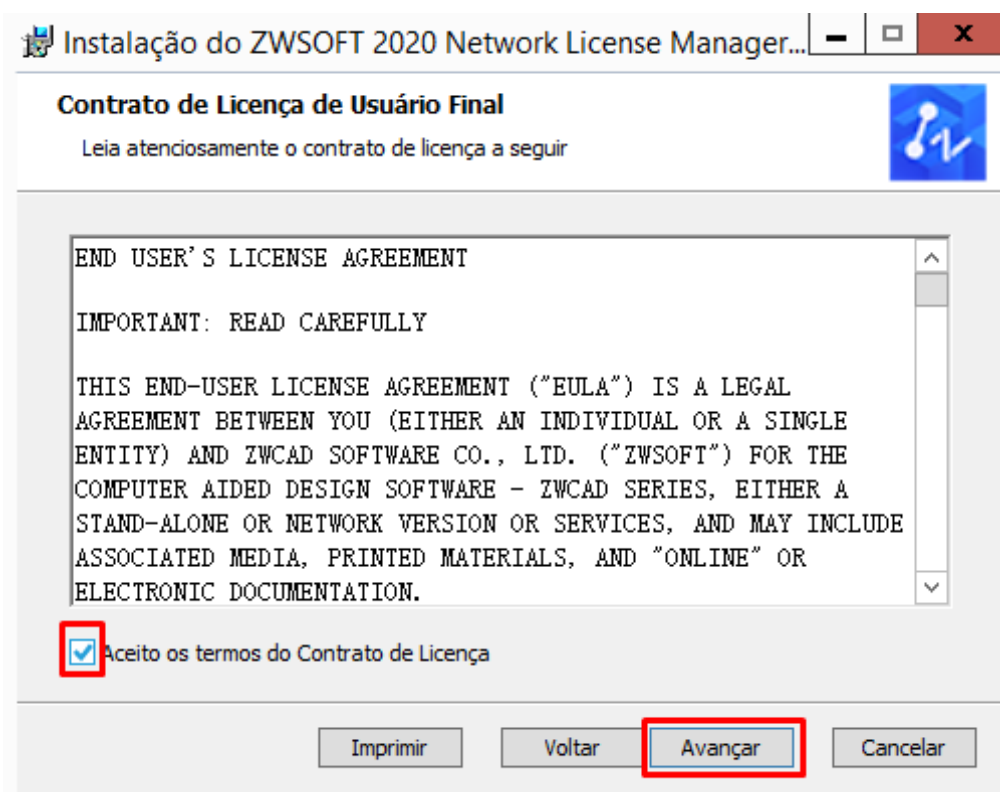
2- Selecione o idioma



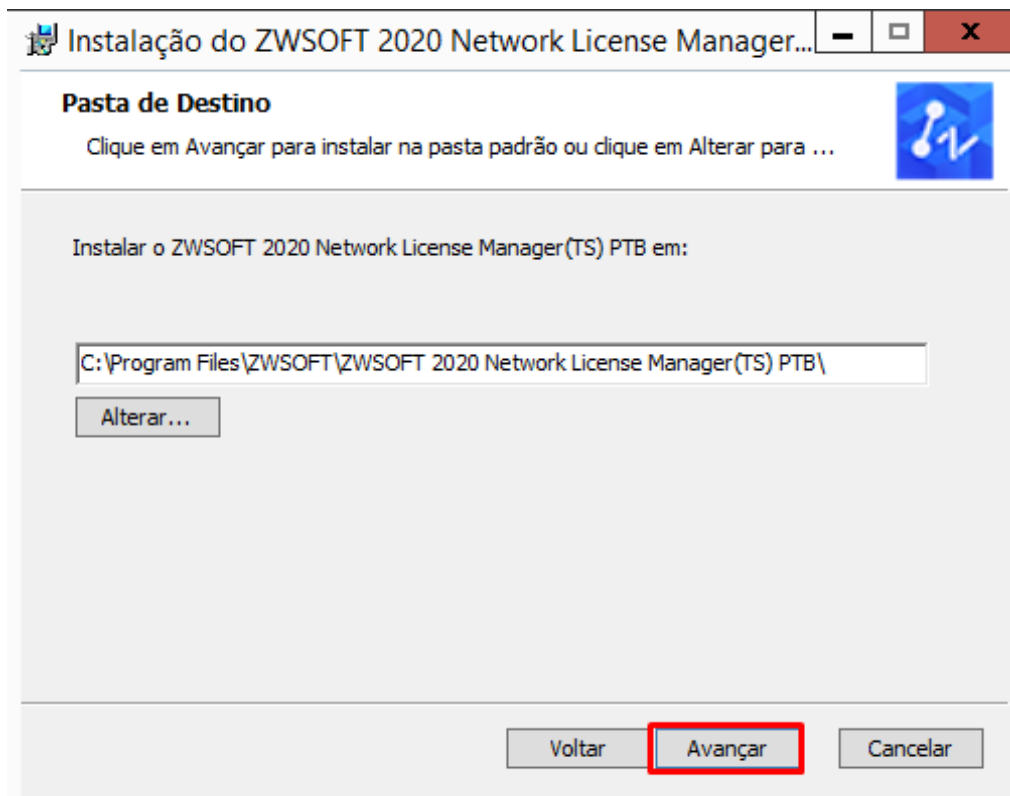
3-Clique na opção “Avançar”:



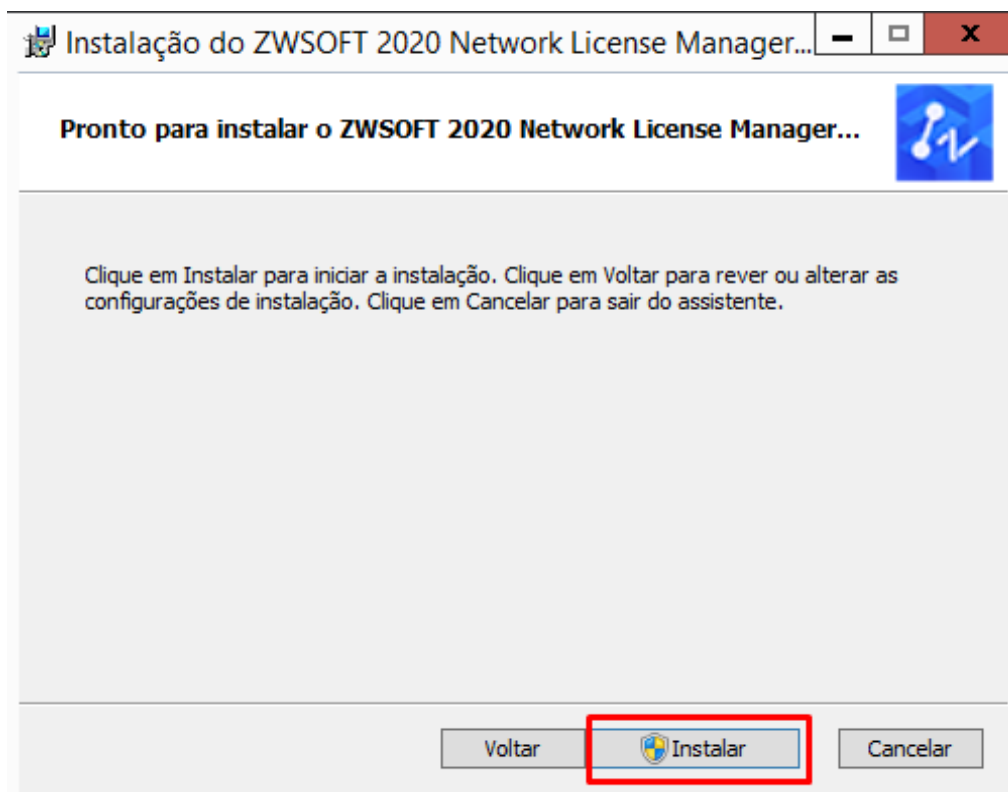
4- Aceite os termos de uso e clique em “avançar”



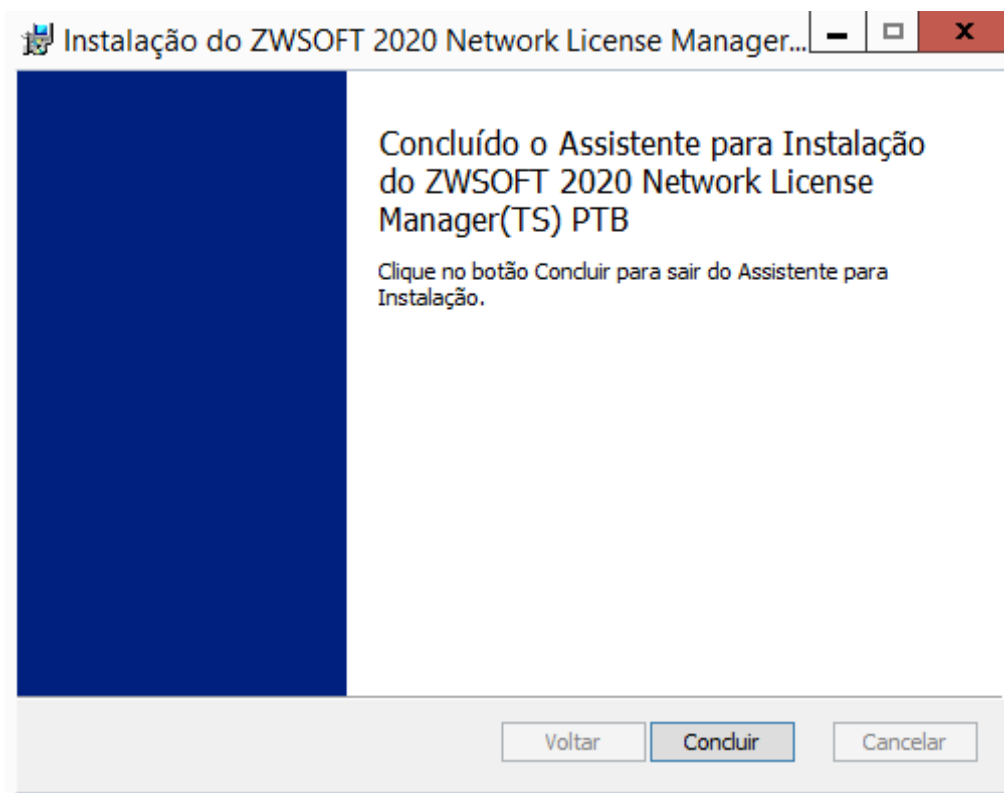
5- Selecione a pasta de arquivo origem e avance



6- Clique em "instalar"



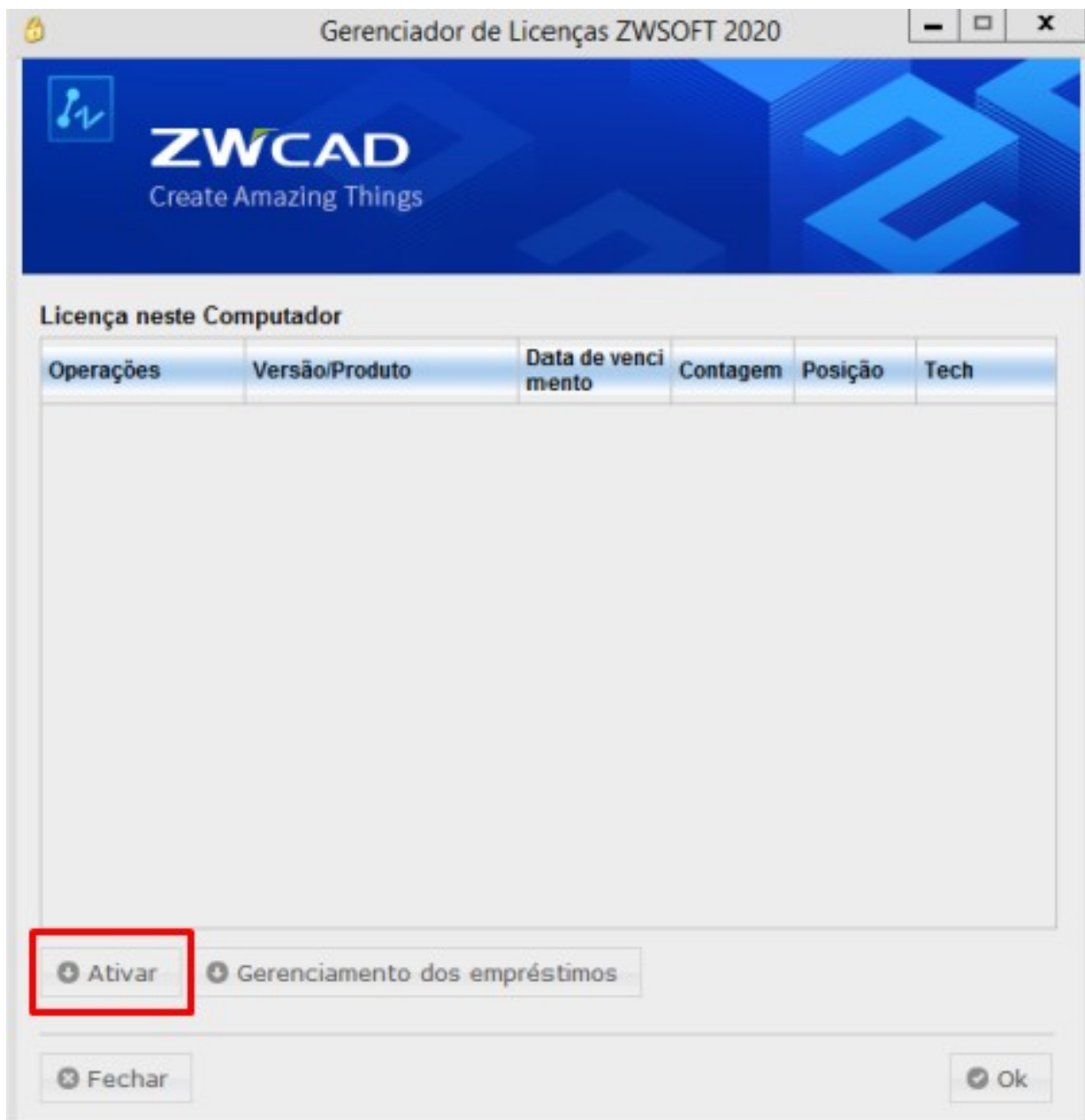
7- Aguarde o download completo e conclua



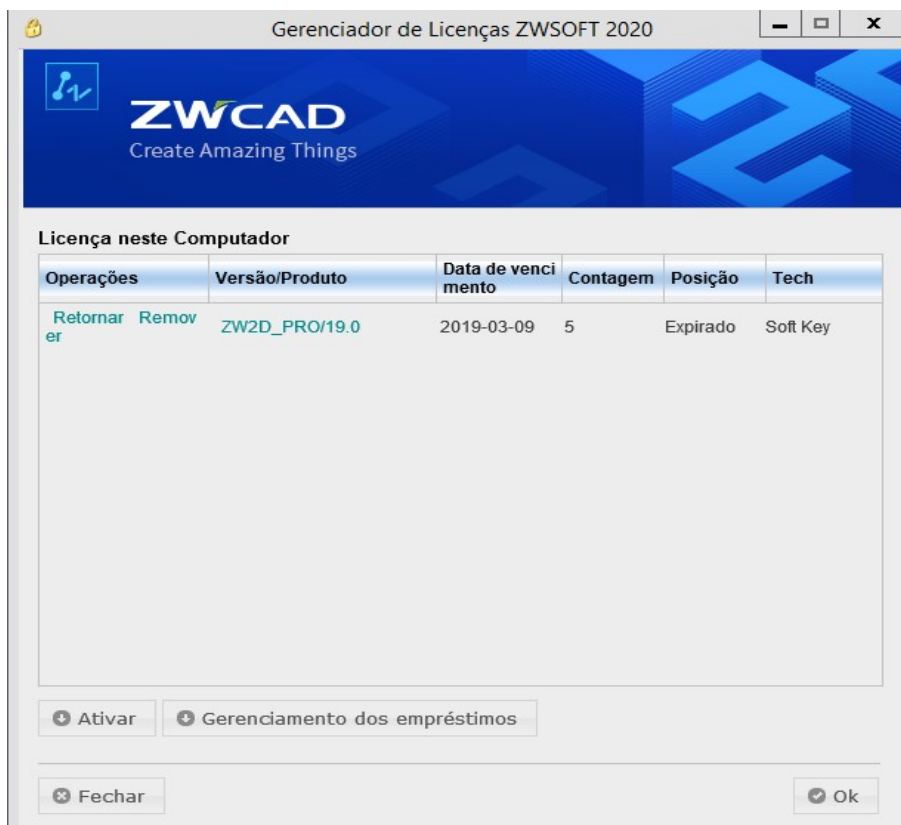
8- Irá baixar as aplicações abaixo, abra as mesmas simultaneamente



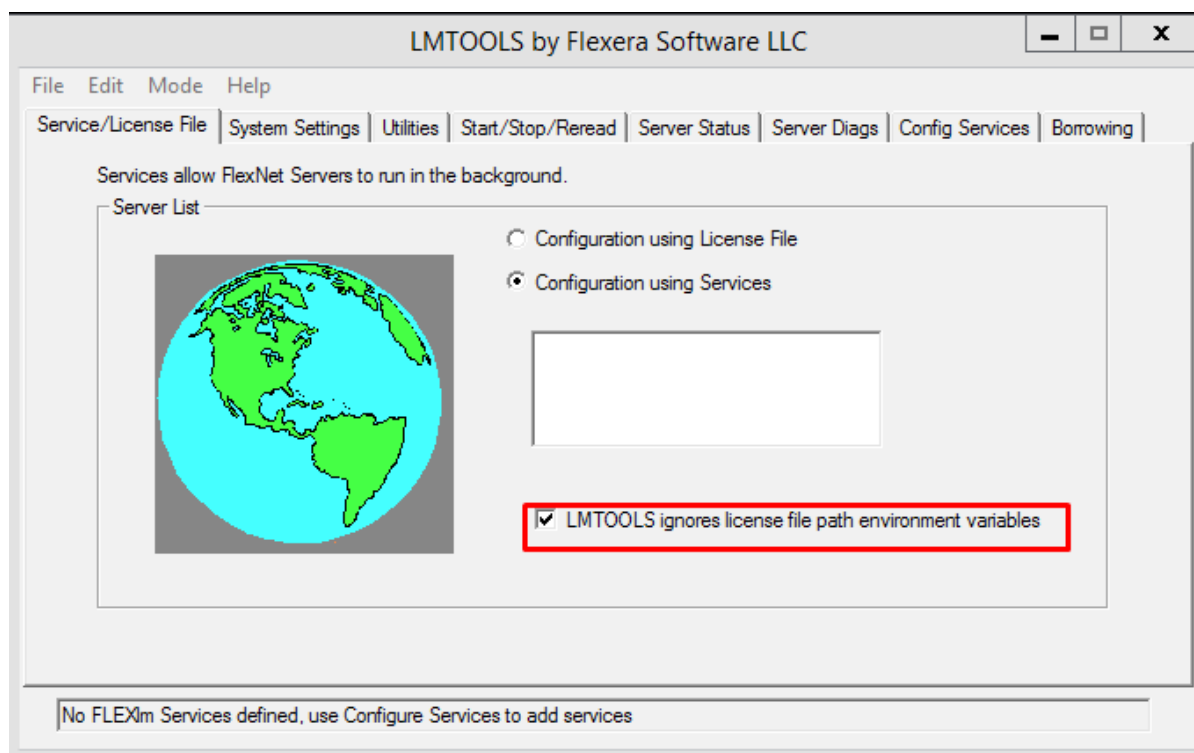
9- No ícone do Network Manager clique em “ativar licença”



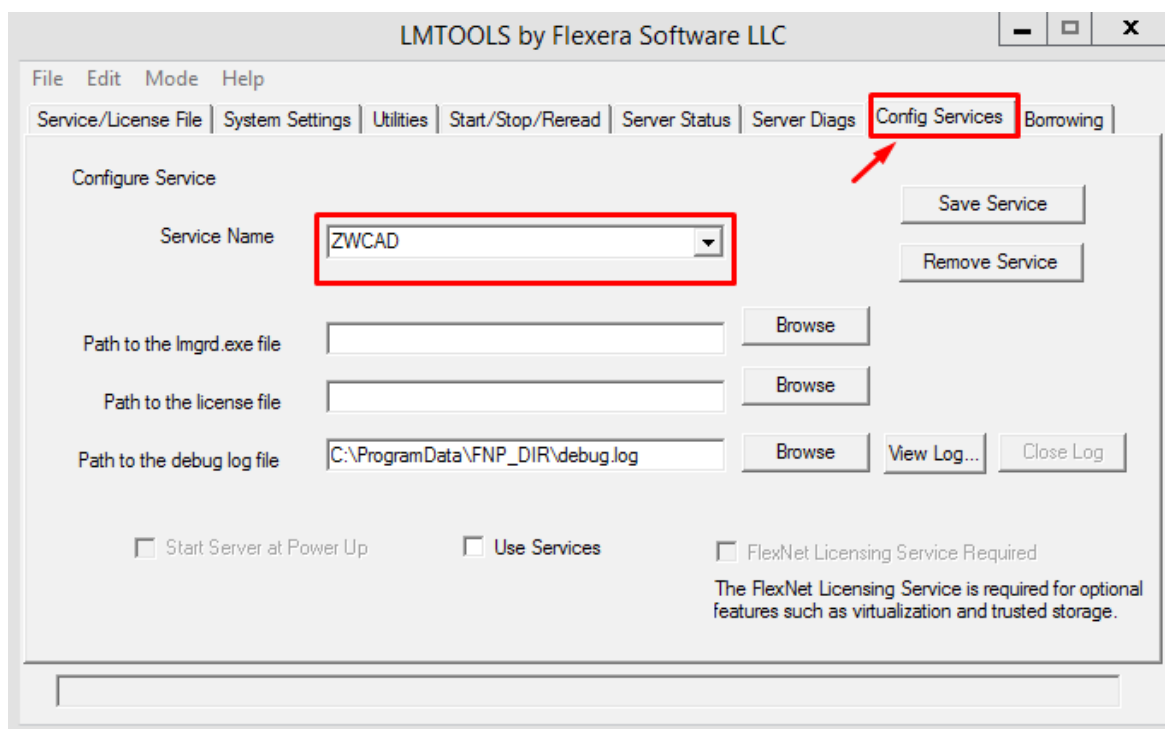
12- Sua licença aparecerá conforme imagem abaixo



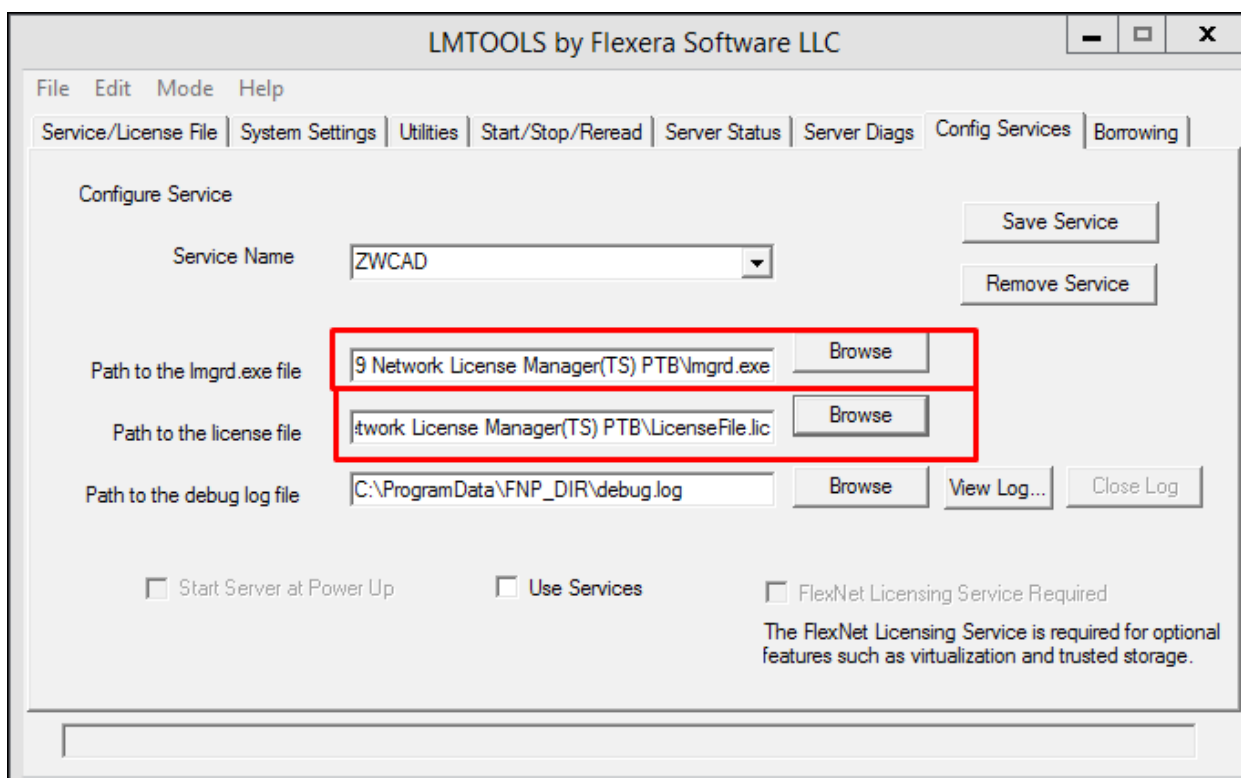
13- Em seguida clique no Network Configures e tique conforme imagem abaixo



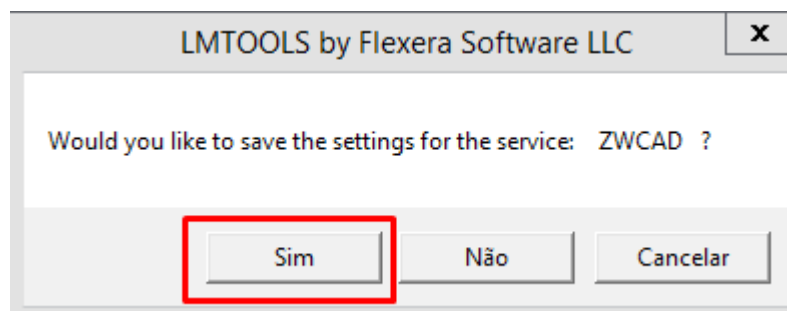
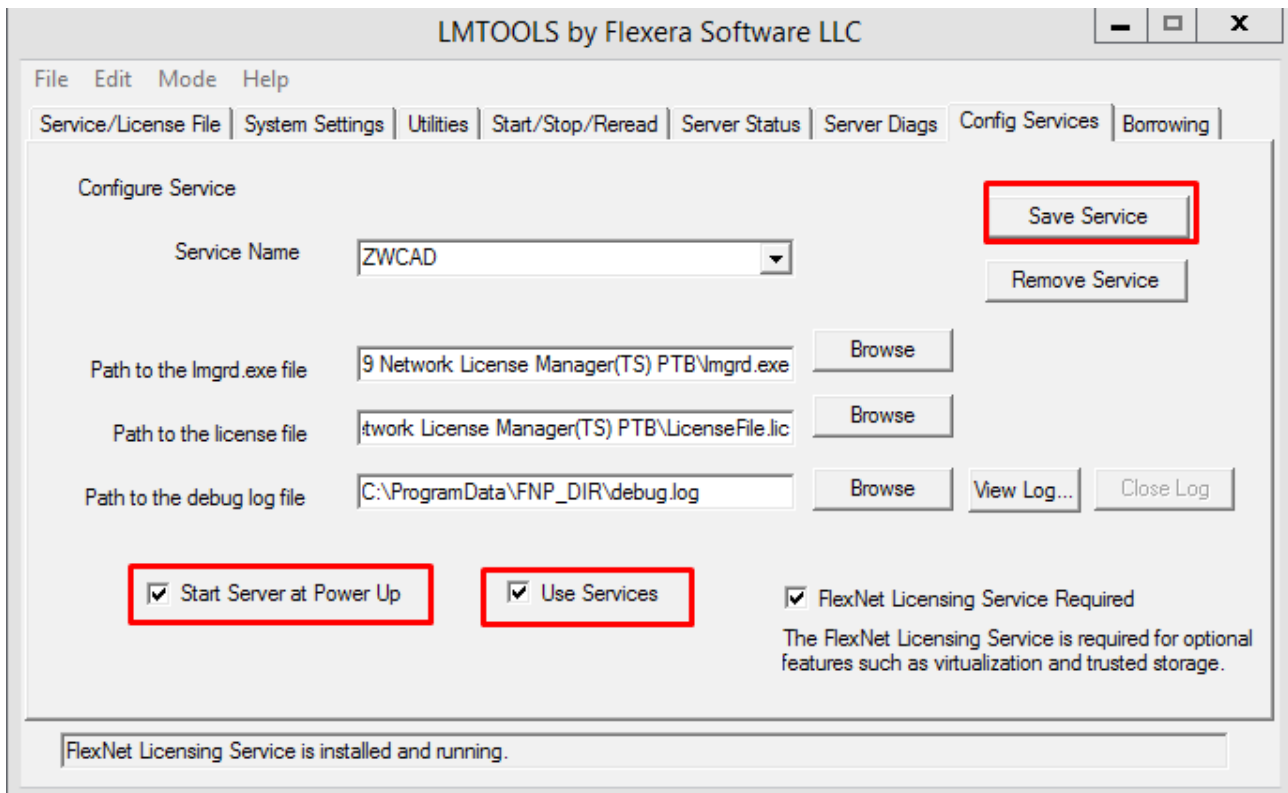
14- Vá em “Config Service” e mude o Service Name para “ZWCAD 2020”



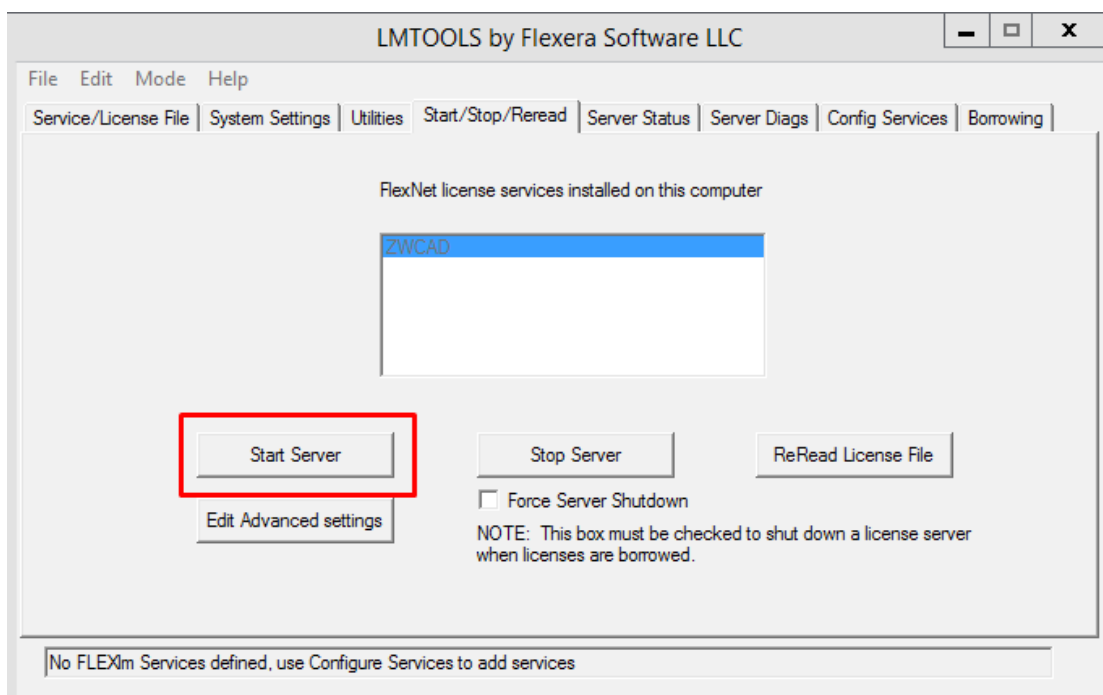
15- Em seguida carregue os arquivos solicitados (Imgrd e License File – a parta já abre aonde os arquivos estão)



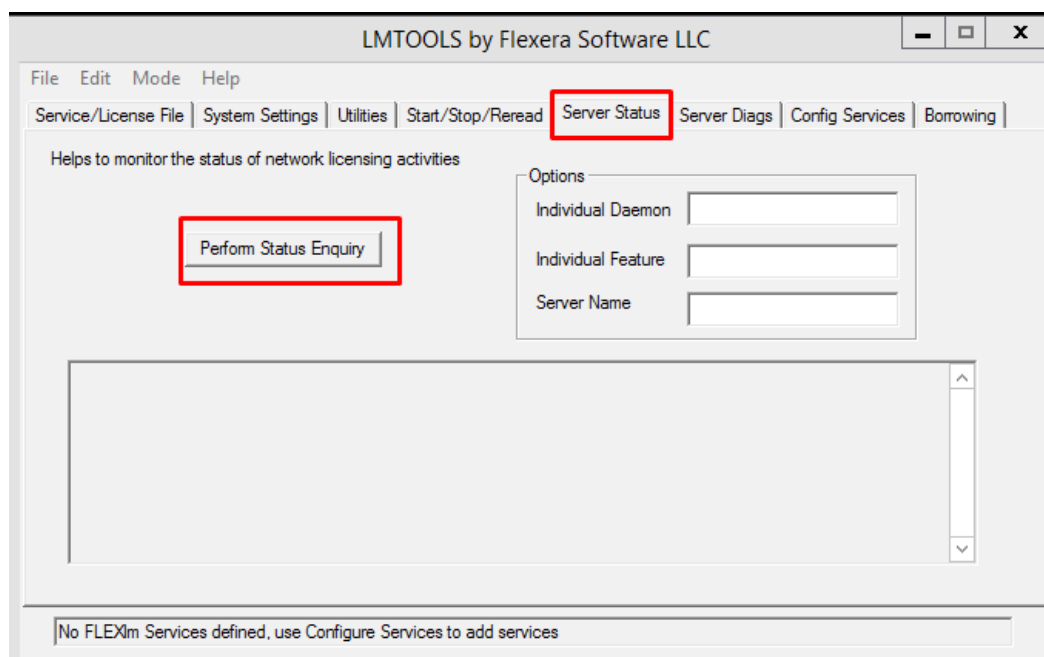
16- Selecione as opções abaixo e salve



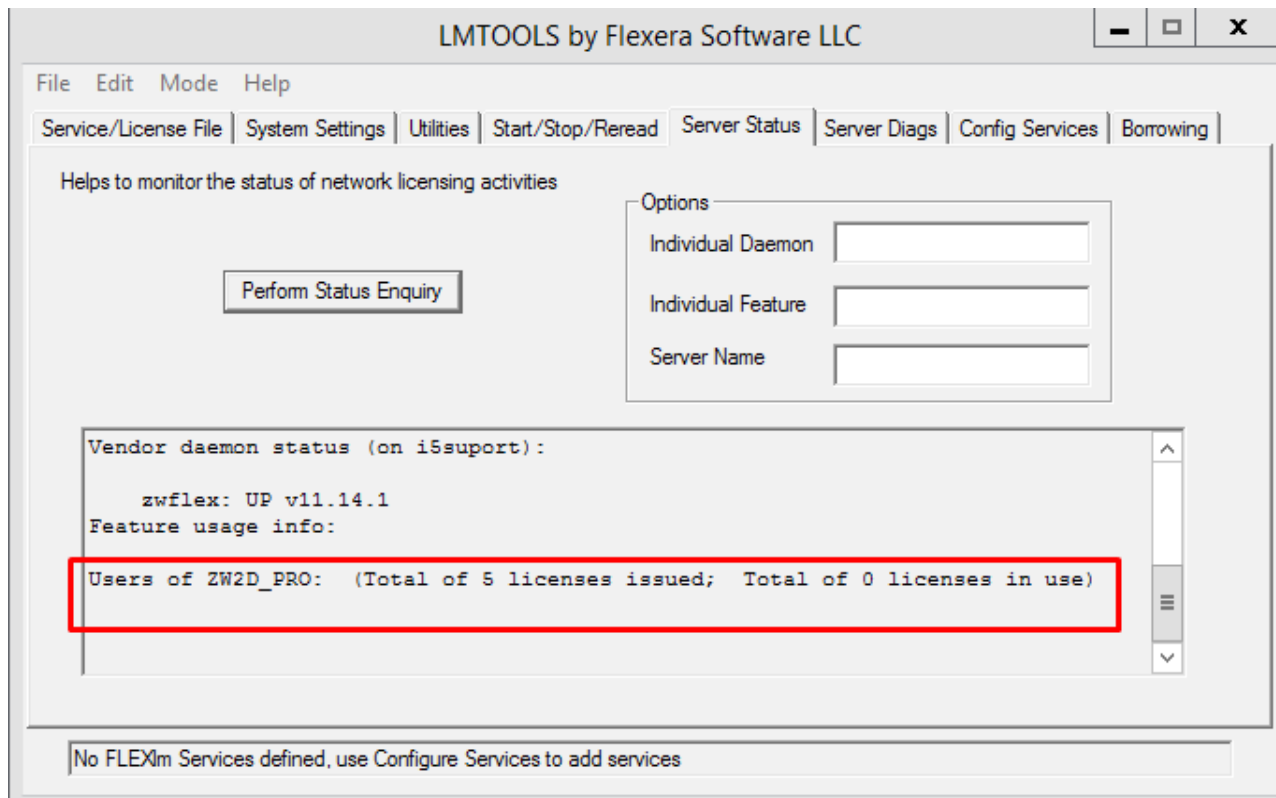
17- Vá na aba Star/ Stop/ Reread e clique em “start server”



18- Em seguida vá na aba Server Status e clique em “Perform Status Enquiry”



19- Aqui mostrará o numero de licenças correspondentes a sua licença e total que está em uso.



Pronto! Seu gerenciador está instalado e ativado pronto para uso!

totalCAD®
SOFTWARES TÉCNICOS